

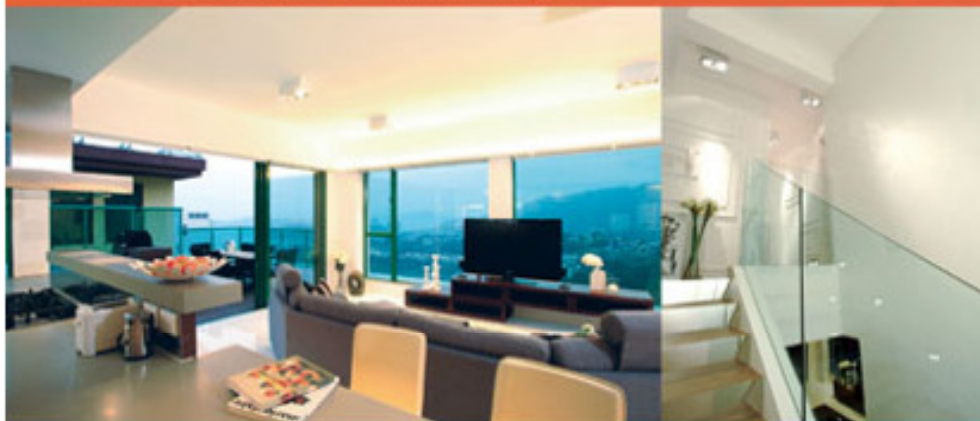
Interior Design
室內設計



明亮寫意

Deluxe Spaces

外籍屋主夫婦放手讓設計師自由發揮，為了滿足屋主對舒適的要求，設計師便配合窗外迷人的港灣景色，設計了此簡潔舒適的寫意家居。
This Discovery Bay home was enhanced with a clean and modish design scheme, with the focus placed on the views and natural light.



Text by Lorraine Leung & Billy Clarke
Interior design & photo courtesy of Paula Ko / K2 Plus Interior Ltd.



—— 千尺的複式單位只有屋主一家四口居住，動區設計以白色和深木色傢俱為主，帶出自然愜意的感覺。新穎以全白色裝飾，餐椅椅組合和天花吊燈的設計時尚，氣質高貴；客廳望向開揚海景，屋主一家可在寬敞的客廳中享受閒意時刻。

親友聚會

設計師在單位內規劃了不少空間讓屋主可以招呼朋友，例如，飯廳旁邊的小型露台擺放了L形沙發，讓房

主及客人可在晚飯後小酌幾杯。客廳旁則有一個以木板打墊的露台，除了有燒烤爐及餐檯外，還設有可供四人使用的按摩池。

開放式廚房是其中一個屋主最喜歡的地方，除了開揚的空間感外，他們尤其欣賞以水晶膠板潔作為櫃門的廚櫃，令廚房的觀感明亮、整潔。

瀟灑自然氣息

除了開放式廚房外，屋主還特別喜歡樓梯和走廊的設計，樓梯鋪以鏡

鋼，恍如懸浮半空中；走廊則採用特色幾何花紋牆紙，締造多元的視覺空間。

主人房設計把簡約自然的風格發揮得淋漓盡致，只見白色裝潢配以深木色傢俱，加上大量的天然光，令房間光潔非常。主人房的设计亮點是套用的某種包鏡趟門，這個設計玄機處處——趟門隱藏了一個大型衣櫃，而衣櫃則有分隔儲區與衣櫥之用；鏡面趟門更可製造恍如移動樓梯般的效

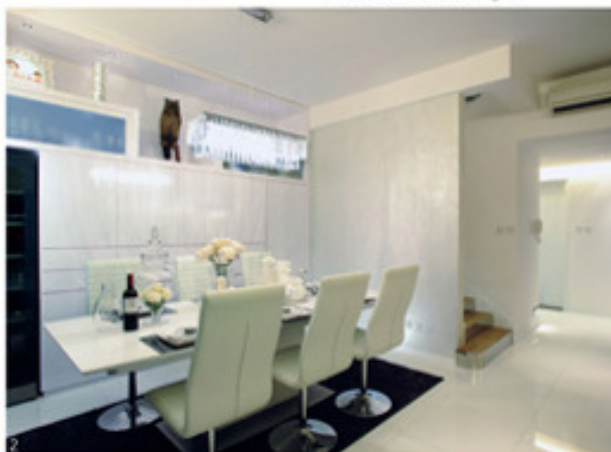


1&2/ 飯廳的設計為全白色，精美俐落的線條配以富有格調的擺設，點出獨特的時尚美感。

The dining area is elegant and toned in clean whites with a hanging rectangular chandelier catching the eye.

3/ 單位居高臨下，大廳擁有全落地玻璃窗戶和兩個露台，坐擁一百八十度的無敵海景。

Electric blinds were setup to provide privacy easily when needed in the evenings, and at other times the almost floor-to-ceiling windows cover the room in natural light.



果，反射窗外的翠綠景致，讓屋主於任何角度都享受得到怡人美景。

天台是設計師特意為屋主夫婦度身訂造的私人享樂空間。設計師先把天台與主人房套間接連，然後以高高的木板把天台範圍重重包圍，最後在此加設兩人使用的按摩池及兩張沙發椅。設計完美地保障了屋主夫婦二人的生活私隱。



A ready marked by distinction before the renovation, this home is located in the luxury residential estate of Chianti on Discovery Bay, with an inviting 2,000 square-feet of space and panoramic views making it better than most. However the owners wanted to enhance it further and so Paulus Ko from K2 Plus Interior was called in and he made the three-room apartment much more suitable for the couple and twin daughters that now live there.

After a small white-toned foyer the entrance of the home leads into the living room, where the sea views are the main focus of the room. Electric blinds were setup to provide privacy easily when needed in the evenings, and at other times the almost floor-to-ceiling windows bring natural light into the room. To make

the most of the natural light – and in accord with the owner's requests – the designer used a sophisticated palette of neutral whites, browns and grays, with a few dashes of black entering in as well. While the dining area is elegant and toned in clean whites, the nearby lounge is mainly gray in tone, with the curved sofa setup being a great place for entertaining guests. In fact the owners entertain guests often and other features that make this easier are the open kitchen and the large terrace which contains a 4-5 people Jacuzzi and a barbecue.

Reflective surfaces and glass banisters stand out on the stairs that lead to the upper floors of the home, where the daughter's bedrooms and the master bedroom are located. The two daughter's bedrooms both feature similar design styles with bright

162/ 客廳以木作傢俬襯托白色主調，配上灰色的柔軟沙發及地毯，烘托出輕鬆自然、寬敞明亮的氛圍。
One can see the profusion of clean whites that mark the living room from this angle looking in from the terrace.

164/ 屋主喜歡與朋友在家中聚會，設計師因而在露台加設燒烤器具、用雙區域及露天按摩池。
The large terrace which contains a Jacuzzi and a barbecue enables the owner to entertain guests.

165/ 天台私隱度極高，讓屋主可隨時享受日光浴。
Wooden panels, a second Jacuzzi and sun chairs make this rooftop a nice private relaxing space.



colours and playful motifs topped with a chandelier in each. Unlike the other rooms of the home, the master bedroom does not have a chandelier and instead a skylight stands out here, working to bring in natural light alongside a large window. In terms of furnishings and decor, there are also a lot of dark woods, and these work against the abundant whites to visually enhance the space. Another central feature here is the large sliding door of the en-suite bathroom which features a large mirror that not only enlarges the visual space and conceals the bathroom, but can also slide away to reveal a wardrobe. The crowning feature on top of the home connected to the master bedroom is the roof, with wooden panels, another Jacuzzi and sun chairs making this a nice private relaxing space. ♦



Upper Floor 上層



Lower Floor 下層

Information

Location: Orient, Discovery Bay
(愉景灣尚堤)
Size: 2,000 sq.ft.

1A3/ 主人房擁有特大窗戶及寬闊的天窗，因而有助天然光線透進室內。There are also a lot of dark woods, and these work against the abundant whites and natural light to visually enhance the space.

2/ 主人房套廁以潔白色為主調，再加入少量亮面磚作點綴空間，營造出悠閒的酒店格調。This en-suite bathroom is decorated with shiny mosaics.

4&5/ 兩間女兒房均以整潔的白色主題設計，在白色基調之上，有色彩鮮艷的傢具和床品作點綴。The two daughter's bedrooms both feature similar design styles with bright colours and playful motifs topped with a chandelier in each.

